

# Fact Sheet



# General Information



<b>Hotel Name</b>	<b>Levni Hotel Istanbul</b>
<b>Opening Year</b>	<b>2010</b>
<b>Category</b>	<b>Special Category</b>
<b>Total Rooms</b>	<b>75</b>
<b>Address</b>	<b>Ankara Str. No:12 Sirkeci / Istanbul   TURKEY</b>
<b>Telephone</b>	<b>+90 212 519 10 19</b>
<b>E-mail</b>	<b>info@levnihotel.com</b>
<b>Web</b>	<b>www.levnihotel.com</b>
<b>Instagram</b>	<b>@levnispahotel</b>
<b>Valid Payment</b>	<b>Cash, VISA, MasterCard, Amex</b>
<b>C/Out   C/In</b>	<b>C/Out: 12:00   C/In: 14:00</b>
<b>Pet Policy</b>	<b>Unfortunately Pet Not Allowed</b>
<b>Languages Spoken</b>	<b>Turkish, English, French, Spanish, Italian</b>
<b>Company Name</b>	<b>Karacabay Dış Tic. Müh. Hiz. ve Turizm San. Tic. Ltd. Şti. Hocapaşa V.D. 5060298765</b>
<b>Bank Account</b>	<b>TL - TR 86 0001 5001 5800 7301 2940 27</b>
<b>SWIFT (BIC) TVBATR2A</b>	<b>EURO - TR 76 0001 5001 5804 8014 1615 61</b>



# Location / Transportation

We kindly ask our guests to use the **main entrance** situated in Ankara street. Located just at the exit of the Marmaray metro line, it is the main entrance where our staff will greet you directly at the moment of your entrance to help you with your luggage.

**Please note that the Levni Hotel & Spa has two entrances.** Some taxi drivers may drop you off at our back entrance in Ebussuud Street, which can take a bit longer for you to reach the lobby and reception desk. For this case, keep the printed document with you for the taxi driver to drop you off just at the main entrance of Levni in Ankara Street.

60 minutes drive from Istanbul Airport (43 km) Airport Phone +90 212-4441442

90 minutes drive from Sabiha Gökçen International Airport (48,5 km). Airport Phone: +90 212-5888888

Galataport, a terminal for luxury cruise ships, is 2,6 kilometres from the hotel.

Airport VIP Transportation Fee: 80 EUR (one way) on request

## Transportation in the City:

When it comes to public transportation in Istanbul, there are an amazing number of options. You can choose to travel by taxi, limo, minibus, train, ferry, underground by metro or funicular railway, or get some stunning bird's eye views from a cable car – all part of the same public transit system!

## Useful Information Web Sites:

<https://istanbulvacationtips.com/how-to-get-around-istanbul/>

[https://en.wikipedia.org/wiki/Public\\_transport\\_in\\_Istanbul](https://en.wikipedia.org/wiki/Public_transport_in_Istanbul)

[https://travel.usnews.com/Istanbul\\_Turkey/Getting\\_Around/](https://travel.usnews.com/Istanbul_Turkey/Getting_Around/)

<https://www.tooistanbul.com/en/public-transportation-istanbul/>



# Accommodation / Room Amenities



Levni Hotel & Spa is a luxury hotel with 75 beautifully furnished rooms and suites. The hotel is located in the center of the old city, easy to reach on foot from the train station in Sirkeci, Tram, and Marmararay, and is also very close to major tourist places, such as Sultanahmet Square, Blue Mosque, piers, Grand Bazaar, Topkapi Palace, Underground cistern, St. Sophia, etc.

Rooms are equipped with air conditioning, a minibar, hairdryer. Flat screen satellite TV, telephone, tea & coffee facilities, sprinkler. The standard room has carpet, and the Deluxe and Executive rooms have a parquet floor.

Deluxe and standard connection rooms are available.

We will gladly cater to your wishes - please indicate them when booking your room. Every room has a private bathroom and some have a balcony. Enjoy your leisure time at the indoor swimming pool or fitness room. Forget the worries of the day as you enjoy a relaxing massage. Towels and bathrobes are available for your trip to the SPA.

All kinds of delicacies are available to savor in the Gourmet or Terrace restaurant, with specialties for vegetarians and diabetics too. In the evening we will welcome you to the hotel bar. The hotel has its bistro providing light snacks. The hotel has a cozy wine/beer pub



# Historical & Touristic Sites

## Walking Distance:

- Hodjapasha Culture Center – 0,1 km
- Gülhane Park – 0,2 km
- Hagia Sophia – 0,8 km
- Basilica Cistern – 0,7 km
- Sultanahmet Mosque – 0,9km
- New (Yeni) Mosque – 0,6 km
- Topkapi Palace – 0,7 km
- Spice Bazaar – 0,6 km
- Grand Bazaar – 0,9 km
- St. Irene Church 0,9 km
- Archeology Museum – 0,6 km
- Rustem Pasha Mosque – 1,1 km
- First of the Month Church – 1,1 km
- Süleymaniye Mosque – 1,4 km
- Galata Mevlevi Museum – 2,2 km

## Easy Access with Taxi:

- Miniaturk – 8 km
- Istanbul Toy Museum – 12 km
- Asiyan Museum - 12 km
- Rumeli Fortress – 12,4 km
- Anatolian Fortress – 13,6 km
- Borusan Contemporary – 13 km



More Info: <http://en.istanbul.gov.tr/historical-and-touristic-sites>

# Historical & Touristic Sites 2

## Easy Access with

### Public Transportation:

- Galata Tower – 2 km
- Galataport – 2,6 km
- Aya Kiryaki Church – 1,8 km
- Neve Shalom Synagogue 2,2 km
- The Museum Of Innocence – 2,6 km
- St. Anthony of Padua – 2,9 km
- Istanbul Modern Museum – 2,3 km
- Madame Tussaud – 3,1 km
- Hagia Triada Church – 3,2 km
- Salt Galata Museum – 3,4 km
- Dolmabahçe Palace – 3,9 km
- Bulgarian Orthodox Church – 4,1 km
- Pammakaristos Church – 4,4 km
- Vlaherna Meryem Ana Church – 5 km
- Fener Greek High School – 4,1 km
- Istanbul Chora Museum – 5 km
- Military Museum – 5 km
- Naval Museum – 5 km
- Çırağan Palace – 5,6 km
- Yıldız Palace – 6,4 km
- Eyüp Sultan Mosque – 7 km
- Beylerbeyi Palace – 7,9 km
- Panorama 1453 – 9 km



More Info: <http://en.istanbul.gov.tr/historical-and-touristic-sites>

# Rooms

## Standart Twin / Double Room



### Room Specification

**Occupancy:** 2 persons

**Approximate Sizes:** 15-17 m<sup>2</sup>

**Bed type:** Single bed or double bed

### Bed Size

**Single Bed:** 100 x 200 cm

**Double Bed:** 180 x 200 cm

### Room Description

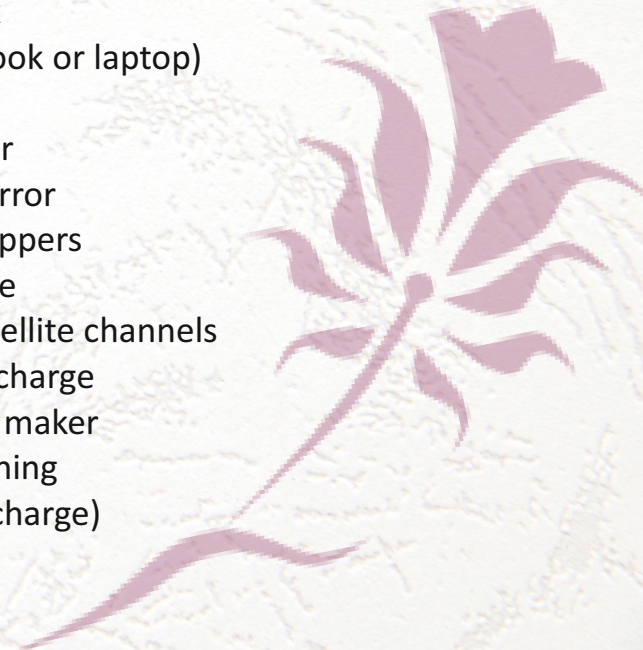
**View:** Mostly have city view on different floors

**Room floor:** Carpet

**Bathroom:** Bathtub or shower with glass doors

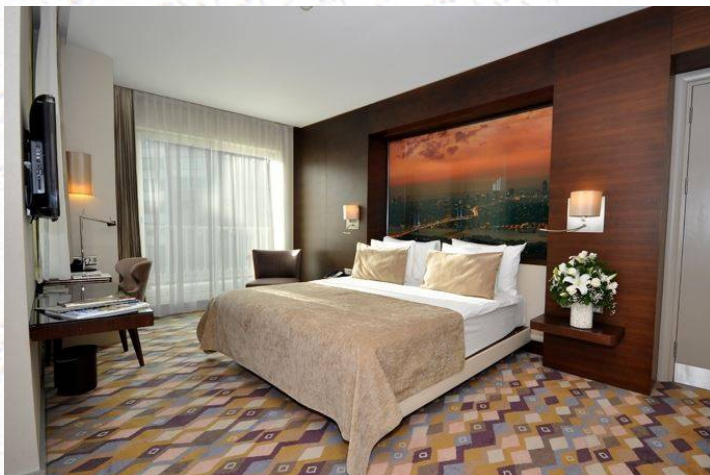
### Room Facilities

- » Safe box  
(can be used for notebook or laptop)
- » Desk
- » Hair dryer
- » Make up mirror
- » Bathrobes, slippers
- » Telephone
- » Flat-screen TV with satellite channels
- » Minibar at surcharge
- » Tea and coffee maker
- » Air conditioning
- » Wi-Fi (Free of charge)



# Rooms

## Deluxe Double / Twin Room



### Room Specification

**Occupancy:** 2 persons

**Approximate Sizes:** 19-25 m<sup>2</sup>

**Bed type:** Single bed or double bed

### Bed Size

**Single Bed:** 100 x 200 cm

**Double Bed:** 200 x 200 cm

### Room Description

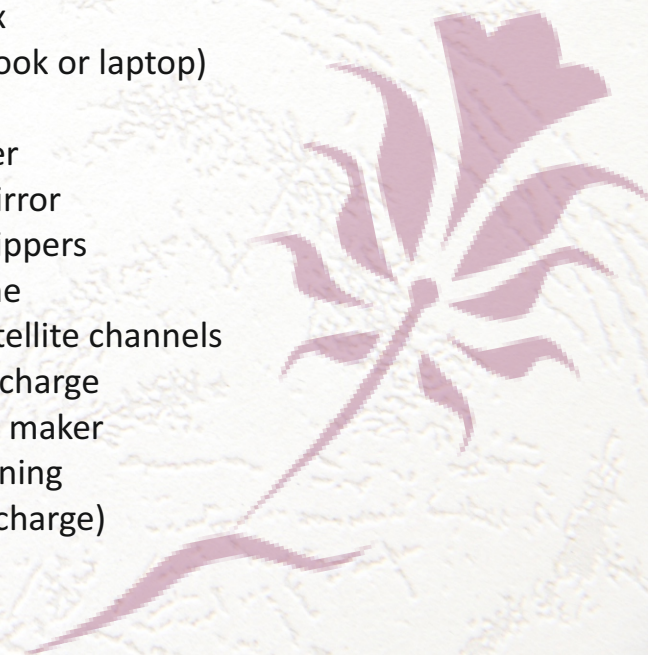
**View :** Sea or city view

**Room floor:** Mostly Wooden

**Bathroom:** Bathtub with glass door  
Some rooms have space for extra bed

### Room Facilities

- » Safe box  
(can be used for notebook or laptop)
- » Desk
- » Hair dryer
- » Make up mirror
- » Bathrobes, slippers
- » Telephone
- » Flat-screen TV with satellite channels
- » Minibar at surcharge
- » Tea and coffee maker
- » Air conditioning
- » Wi-Fi (Free of charge)



# Rooms

## Standart Connected Family Room



### Room Specification

**Occupancy:** 2 persons in each room

**Approximate Sizes:** 15-17 m<sup>2</sup> (each room )

**Bed type :** Single bed or double bed

### Bed Size

**Single Bed:** 100 – 200 cm /

**Double Bed:** 180 x 200 cm

### Room Description

**View:** Mainly have city view on different floors

**Room floor:** Carpet

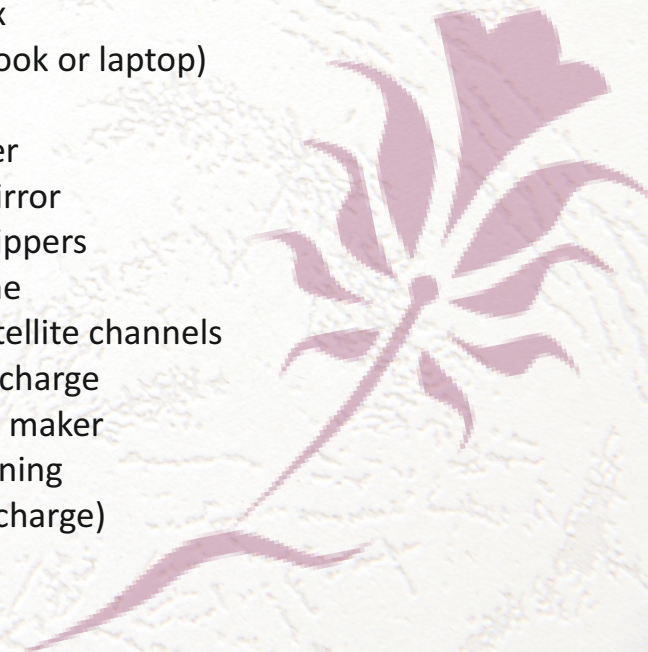
**Bathroom:** Bathtub or shower with glass doors

Each room has its own bathroom

Some rooms have space for extra bed

### Room Facilities

- » Safe box  
(can be used for notebook or laptop)
- » Desk
- » Hair dryer
- » Make up mirror
- » Bathrobes, slippers
- » Telephone
- » Flat-screen TV with satellite channels
- » Minibar at surcharge
- » Tea and coffee maker
- » Air conditioning
- » Wi-Fi (Free of charge)



# Rooms

## Deluxe Family Room



### Room Specification

**Occupancy:** 2 persons in each room

**Approximate Sizes:** 19-25 m<sup>2</sup>

**Bed type:** Single bed or double bed

### Bed Size

**Single Bed :** 100 x 200 cm

**Double Bed :** 200 x 200 cm

### Room Description

**View:** sea or city view

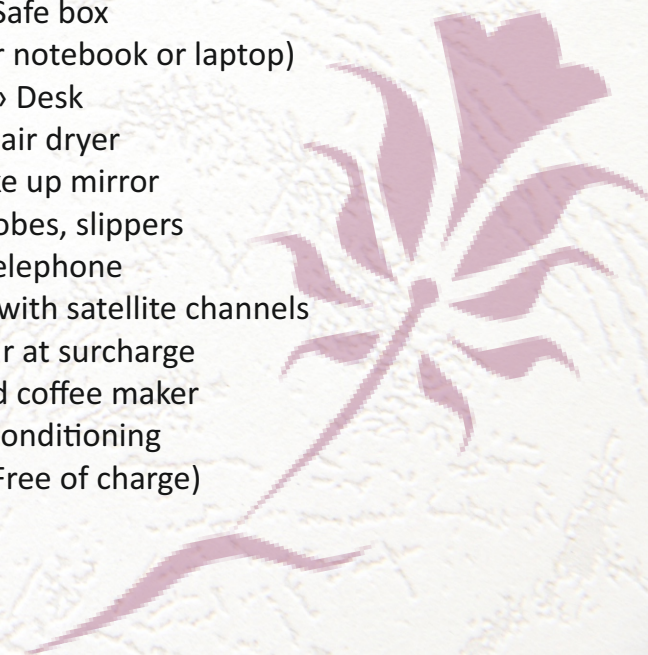
**Room floor:** wooden

**Bathroom:** bathtub with glass door

**Other information:** Some rooms have a space for an extra bed.  
Rooms can be connected in the corridor by a door with a key lock.  
The lock of the room doors has an electronic card system;  
in request these key cards can be adjusted with the same code for  
the use of all family members.

### Room Facilities

- » Safe box  
(can be used for notebook or laptop)
- » Desk
- » Hair dryer
- » Make up mirror
- » Bathrobes, slippers
- » Telephone
- » Flat-screen TV with satellite channels
- » Minibar at surcharge
- » Tea and coffee maker
- » Air conditioning
- » Wi-Fi (Free of charge)



# Rooms

## Executive Room



### Room Specification

**Occupancy:** 2 persons

**Approximate Sizes:** 22-28 m<sup>2</sup>

**Bed type:** Double bed or two single beds

### Bed Size

**Single Bed:** 110 x 200 cm

**Double Bed:** 200 x 200 cm

### Room Description

Located on top floors,

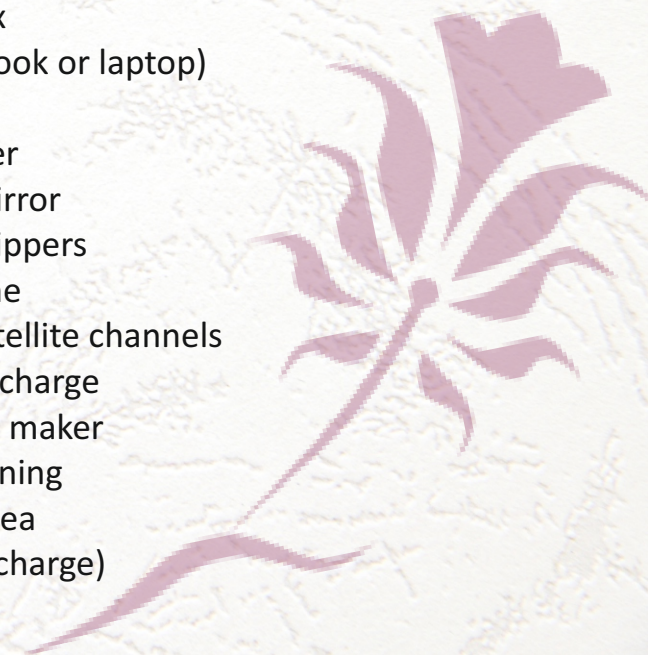
**View:** sea or city view

**Room floor:** Wooden

**Bathroom:** Bathtub (jaccuzi) and shower with glass door  
Some rooms have space for extra bed

### Room Facilities

- » Safe box  
(can be used for notebook or laptop)
- » Desk
- » Hair dryer
- » Make up mirror
- » Bathrobes, slippers
- » Telephone
- » Flat-screen TV with satellite channels
- » Minibar at surcharge
- » Tea and coffee maker
- » Air conditioning
- » Seating area
- » Wi-Fi (Free of charge)



# Rooms

## Suite Room with Bosqhorus



### Room Specification

**Occupancy:** 2 persons

**Approximate Sizes:** 80 m<sup>2</sup>

**Bed type:** Double bed(king size)

### Bed Size

**Double Bed:** 200 x 200 cm

### Room Description

**Floor :** Top floor

**View:** Panoramic view of İstanbul

**Room floor:** Wooden

**Bathroom:** Separate shower and toilet with glass door  
Jacuzzi at the middle of the room with sea and st Sophia view  
Balcony with view

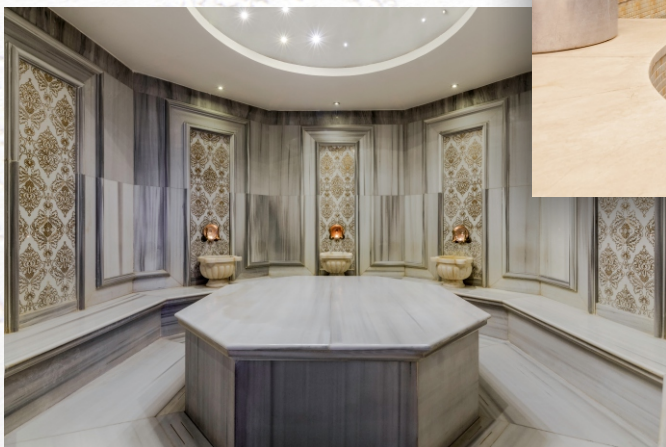
2 extra beds could be install into room when required.

### Room Facilities

- » Safe box  
(can be used for notebook or laptop)
- » Table & armchairs
- » Work desk
- » Hair dryer
- » Make mirror
- » Bathrobes, slippers
- » Telephone
- » Flat-screen TV with satellite channels
- » Minibar at surcharge
- » Tea and coffee maker
- » Air conditioning
- » Seating area
- » Dressing room
- » Wi-fi (Free of charge)

# Spa and Wellness

Rest your body and soul in the heart of Istanbul



# Meeting Room



## General Facilities

- » Wi-Fi
- » Portable Barcovision
- » Sound system
- » Wired microphone
- » Wireless microphone
- » Portable screen
- » Overhead projector
- » DVD player
- » Wireless internet

## Business Center Facilities

- » Computer
- » Fax
- » Printer
- » Other office gadgets (free of charge)
- » Internet connection

## Capacities

Pax	Theatre Room	Class Room	VIP Room
Theatre	96	44	-
Classroom	54	22	-
U Shape	36	16	-
O Shape	46	22	10
Banquet	54	23	-

Meeting Floor Total Capacity For Reception 250 pax

# Bosphorus Terrace Restaurant



H O T E L ■  
**Levni**   
istanbul

Thank you for choosing the Levni Hotel for your upcoming stay in Istanbul!  
Please contact us should you have any special requests.

Phone: +90 212 519 10 19

Email: [info@levnihotel.com](mailto:info@levnihotel.com)

